

Am I a Candidate?

If you have difficulty with your near vision and rely on reading glasses to see things up close, you may be a candidate for a new clinical study. The study is evaluating the PresbyLens® corneal inlay, a clear circular implant – like a tiny contact lens – that is designed to improve near vision and reduce or eliminate the need for reading glasses. The PresbyLens is an investigational device and is currently only available through this clinical study.

If you qualify and choose to participate, you will receive all study-related care by a team of ophthalmology specialists at no cost. This includes the PresbyLens procedure, as well as any examinations or visits associated with the study.

For more information about the PresbyLens Clinical Study, and to see if you might qualify, please call **1-888-978-8399** or visit **www.NearVisionTrial.com**.

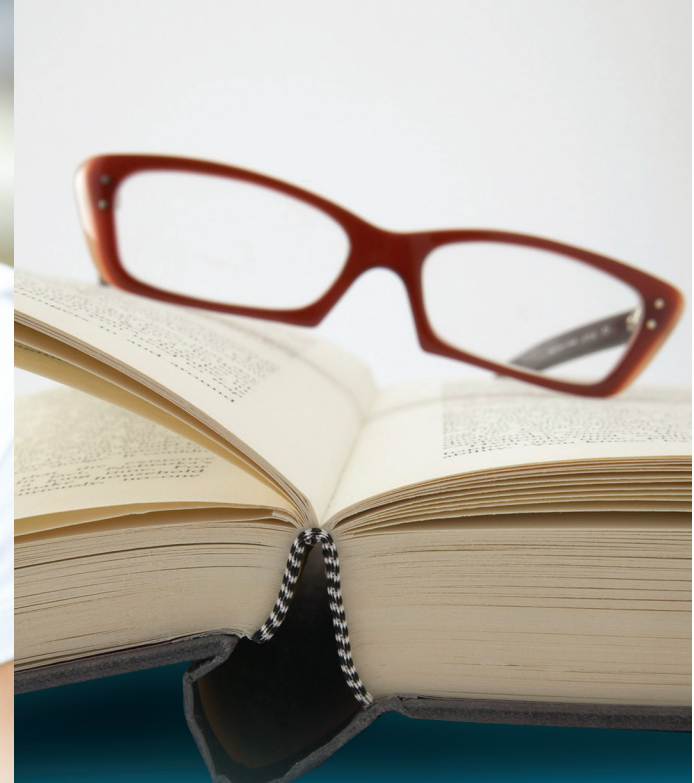


For more information about the PresbyLens® Clinical Study, and to see if you might qualify, please call **1-888-978-8399** or visit **www.NearVisionTrial.com**

RVO
REVISION OPTICS

Caution: The PresbyLens is an investigational device and is limited by United States law to investigational use.

PresbyLens is a registered trademark of Revision Optics, Inc.
© 2010 Revision Optics, Inc. All rights reserved.



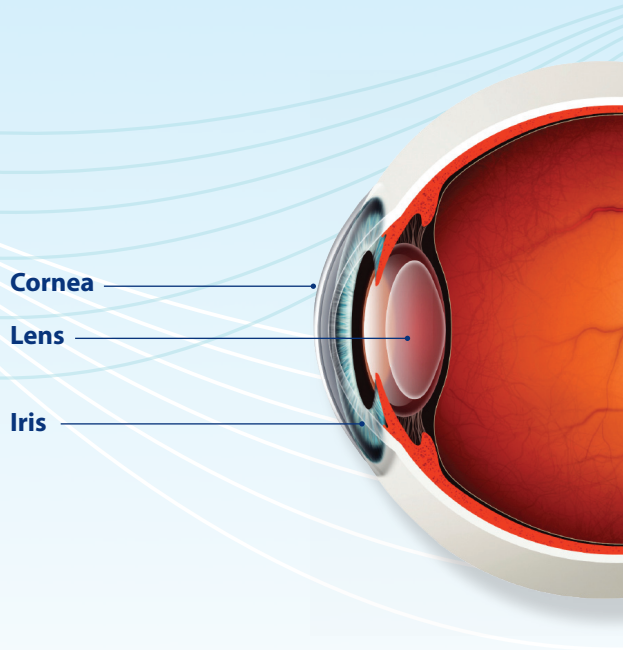
Tired of Your Reading Glasses?

Information About the PresbyLens® Clinical Study

What is Presbyopia?

If you need reading glasses, it may be because you have **presbyopia** – a naturally occurring loss of near vision that affects millions of people everyday. Like grey hair and wrinkles, presbyopia is considered a normal part of the aging process. The first symptoms usually occur between the ages of 40 – 50. However, the ability to focus on near objects declines throughout life, and generally levels off near the age of 60.

Presbyopia is believed to be caused by the gradual loss of elasticity, or flexibility, of the eye's natural **lens**. As the lens loses its flexibility over time, the eye has a harder time focusing up close.



The onset of presbyopia is noticeable when you need to hold books, menus, and other fine print items at arm's length in order to read them. As a result, people with presbyopia depend on reading glasses, contact lenses, or other solutions to help them see up close.

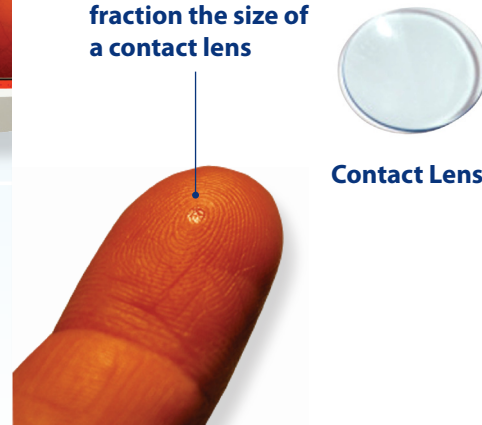
What is the PresbyLens® Corneal Inlay?

Doctors are now evaluating a 15-minute outpatient procedure designed to improve near vision and reduce or eliminate the need for reading glasses. The procedure uses the **PresbyLens®** corneal inlay, and is currently being offered as part of a new clinical study.

The PresbyLens is a clear circular implant – like a tiny contact lens – that is implanted just beneath the surface of the eye. It is 2 millimeters in diameter (the size of a pinhead) and less than half the thickness of a human hair. The lens is designed so that it cannot be seen or felt once in place.

The PresbyLens is made of a water-based material called a hydrogel, commonly used in soft contact lenses. The lens works by gently reshaping the curvature of the cornea (the clear front part of the eye) so that it can more strongly focus light entering the eye. The PresbyLens is placed only in one eye, the non-dominant eye, leaving your other eye untouched. Once in place, the PresbyLens is designed to improve near vision when focusing up close.

At 2mm in diameter, the PresbyLens is a fraction the size of a contact lens



Contact Lens

The PresbyLens Procedure

The PresbyLens is implanted just beneath the surface of the eye during an outpatient procedure. Similar to the common LASIK procedure, a specialized laser is used to create a thin, circular flap in the cornea. The flap is lifted and the PresbyLens is laid in place and allowed to adhere. Once the lens adheres, the flap is closed and the surgery is complete. The PresbyLens procedure is typically performed in less than 15 minutes, with most patients returning to their normal activities the day after their procedure.

Intended Benefits of the PresbyLens Corneal Inlay

- ✓ 15-minute, outpatient procedure
- ✓ Designed to reduce or eliminate the need for reading glasses
- ✓ May be removed or adjusted if needed



For more information about the PresbyLens Clinical Study, and to see if you might qualify, please call **1-888-978-8399** or visit **www.NearVisionTrial.com**